

A close-up photograph of dark, textured fabric, possibly velvet or a similar plush material, showing deep folds and highlights that create a sense of depth and texture. The fabric is set against a plain white background.

Alessio Delfino

femmes naturelles



NEUER KUNSTVEREIN  
ASCHAFFENBURG e.V.



Alessio Delfino

femmes naturelles

*con il contributo di:*

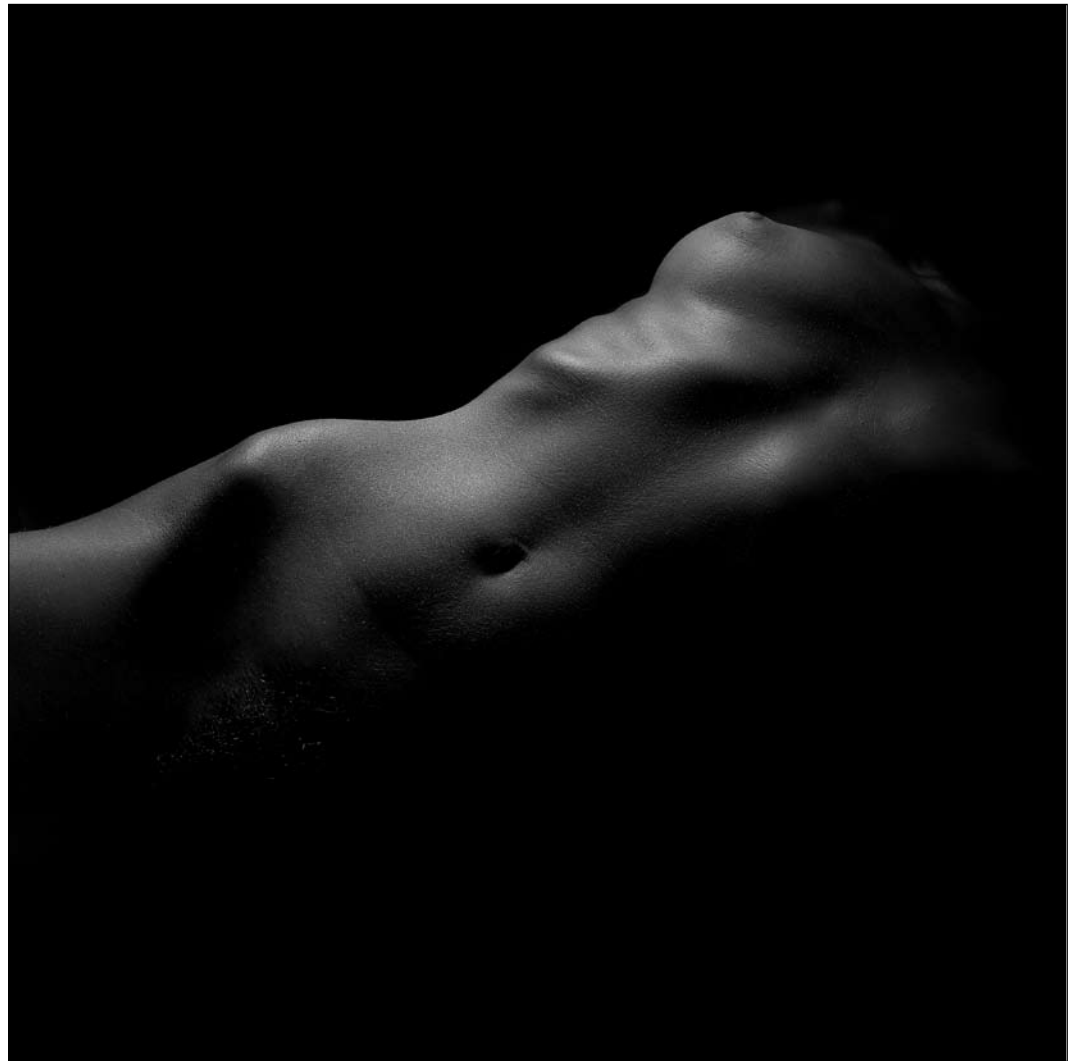


19. März - 24. April 2005  
19 marzo - 24 aprile 2005



**Neuer Kunstverein Aschaffenburg e V.**  
Landingstraße 16, 63739 Aschaffenburg  
Tel-Fax: 06021-299278

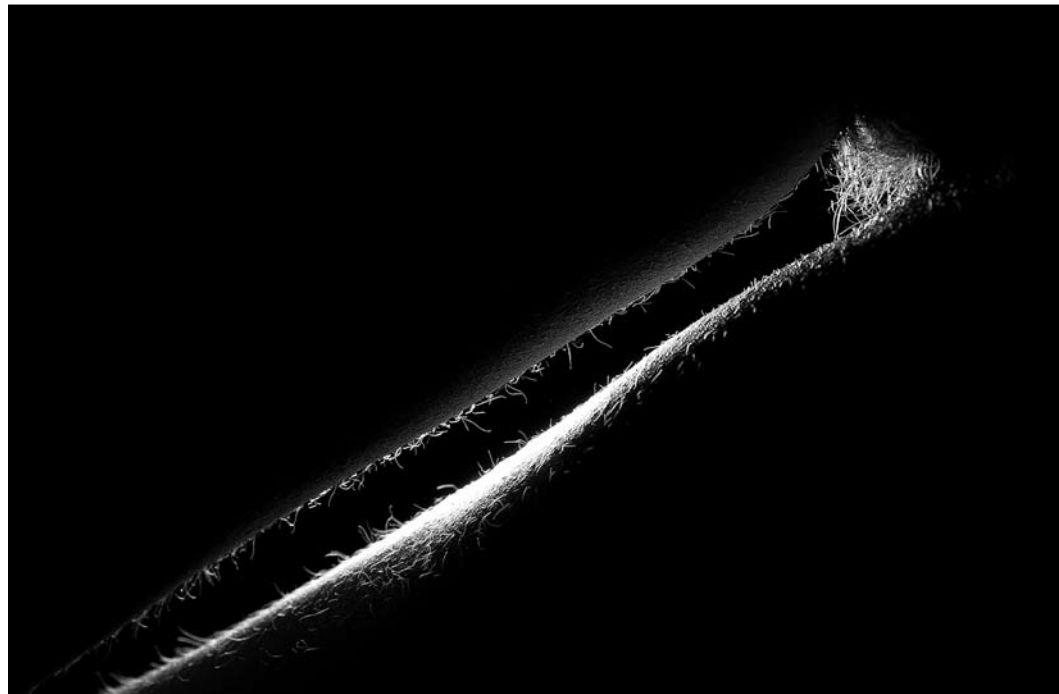
2002 Des Femmes #1  
Stampa lambda cm 40x40





2002 Des Femmes #5  
Stampa lambda cm 40x40



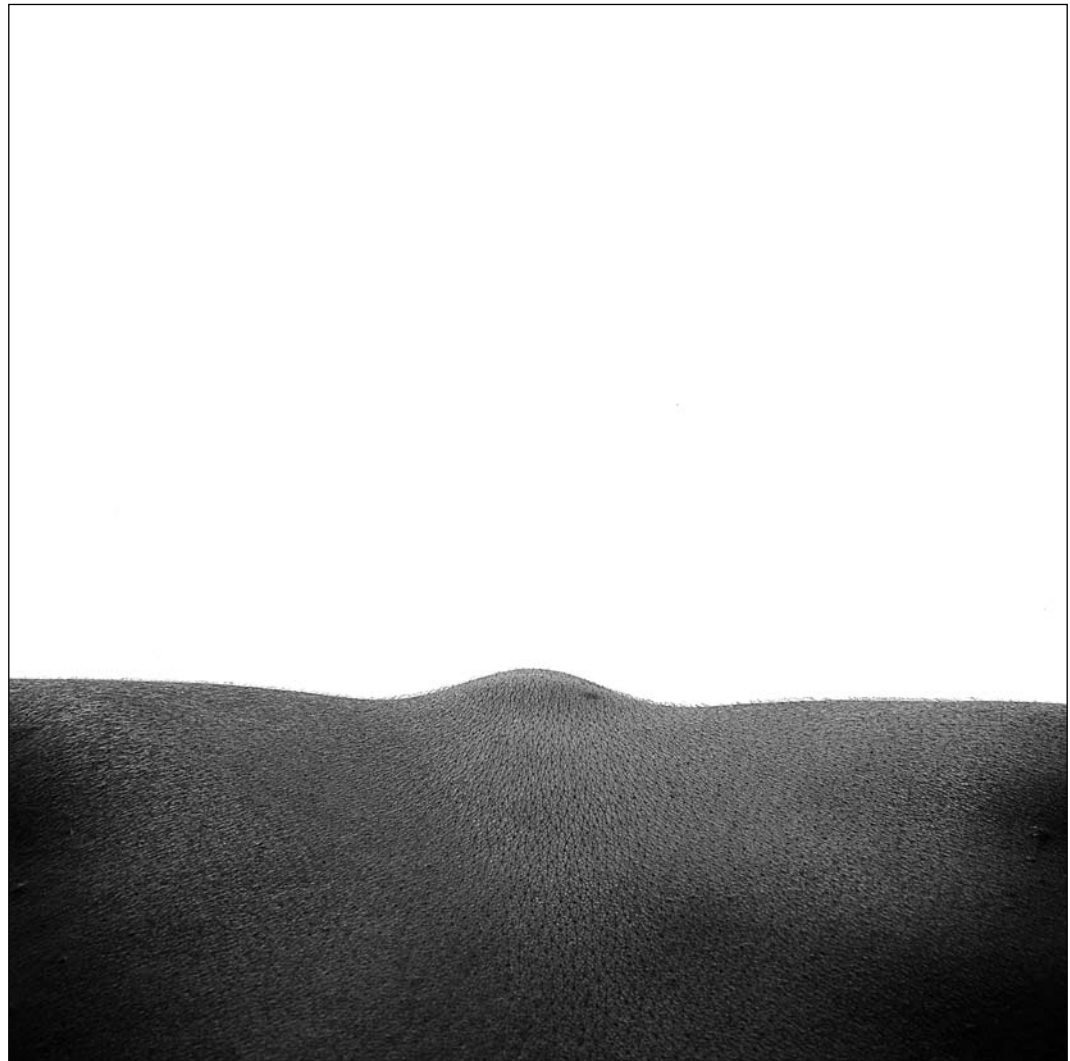


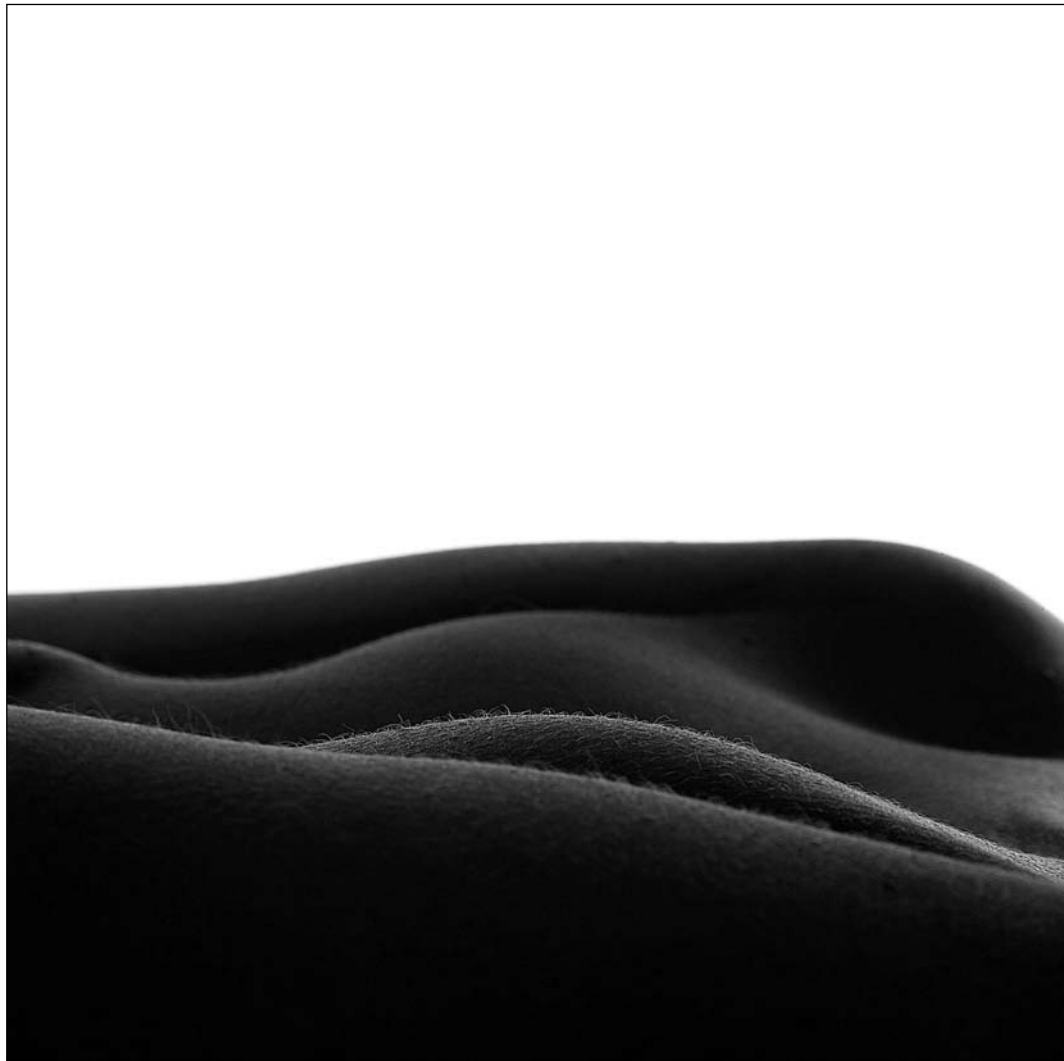
2000 Des Femmes #19  
Stampa lambda cm 40x40



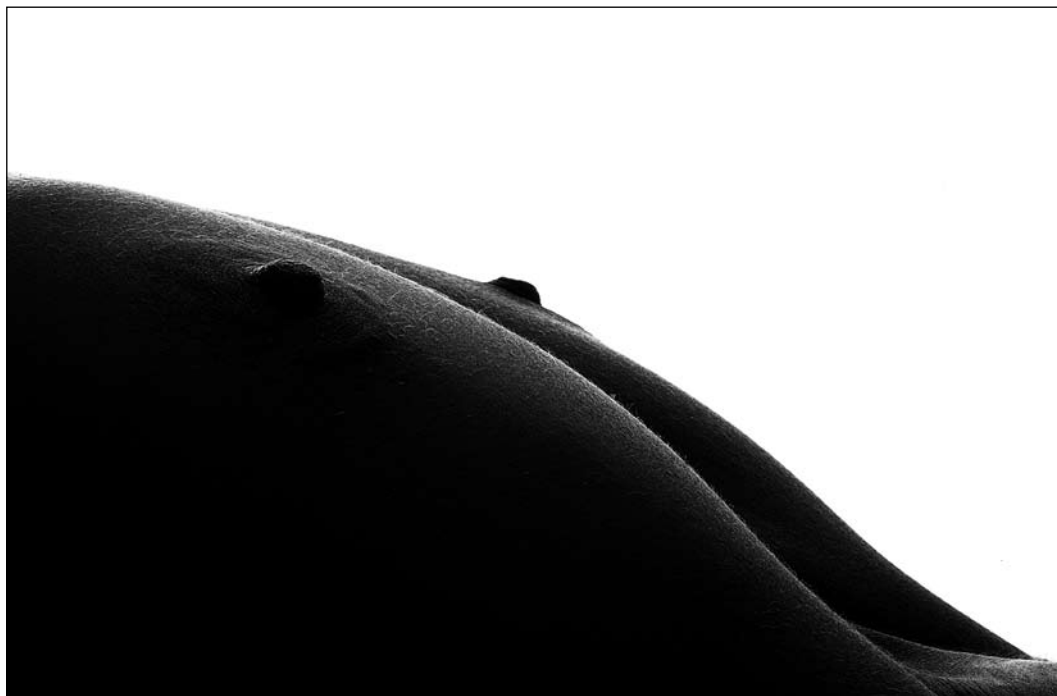


2003 Des Femmes #25  
Stampa lambda cm 40x40

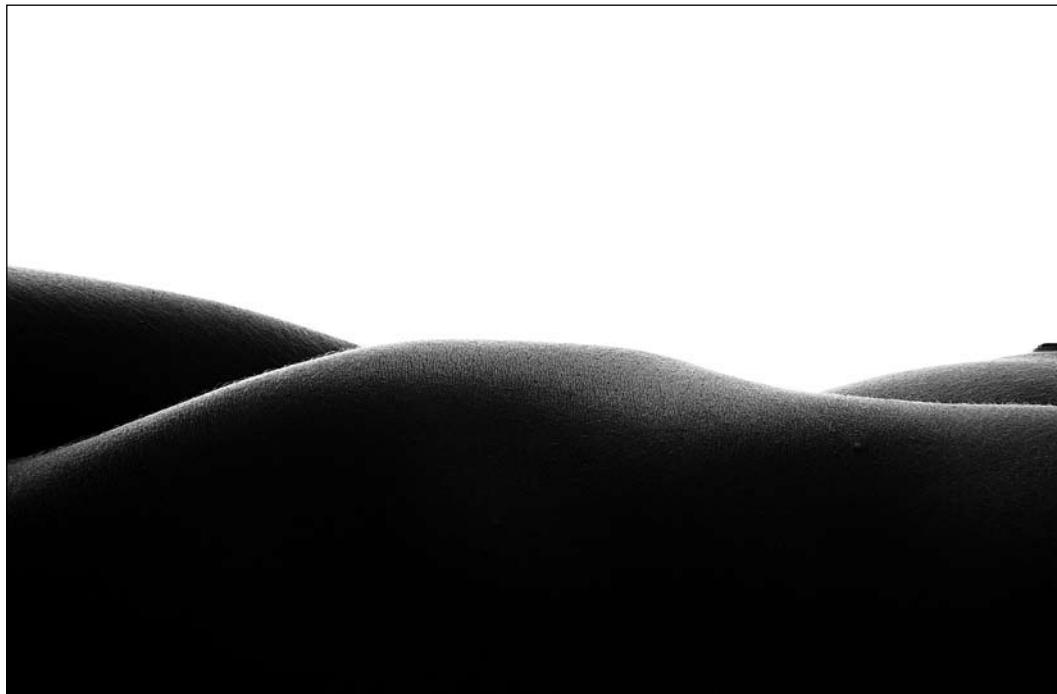






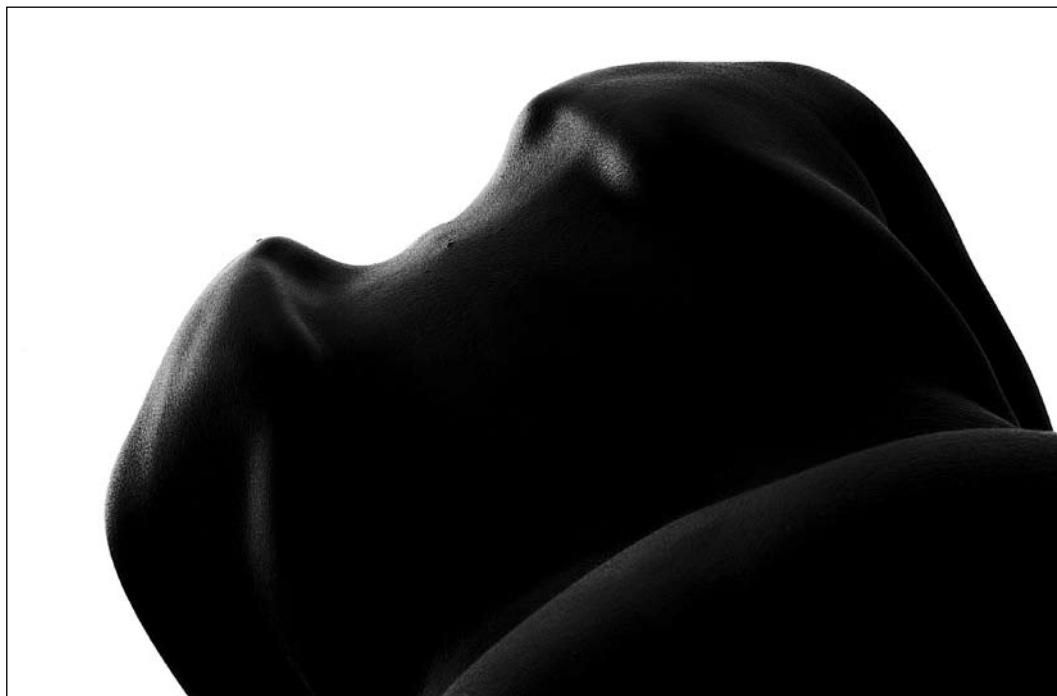


2003 Des Femmes #54  
Stampa lambda  
su plexiglass e alluminio  
cm 80x125





2003 Des Femmes #60  
Stampa lambda  
su plexiglass e alluminio  
cm 80x125



2003 Des Femmes #61  
Stampa lambda  
su plexiglass e alluminio  
cm 80x125

2003 Travaux en cours  
Dites moi qui je suis  
Stampa lambda  
su plexiglass e alluminio  
cm 70x70





2003 Travaux en cours  
Mes rêves disaient la vérité  
Stampa lambda  
su plexiglass e alluminio  
cm 125x125





