



ALESSIO DELFINO

DES FEMMES
1999-2002

STUDIO GHIGLIONE
PALAZZO DORIA • GENOVA

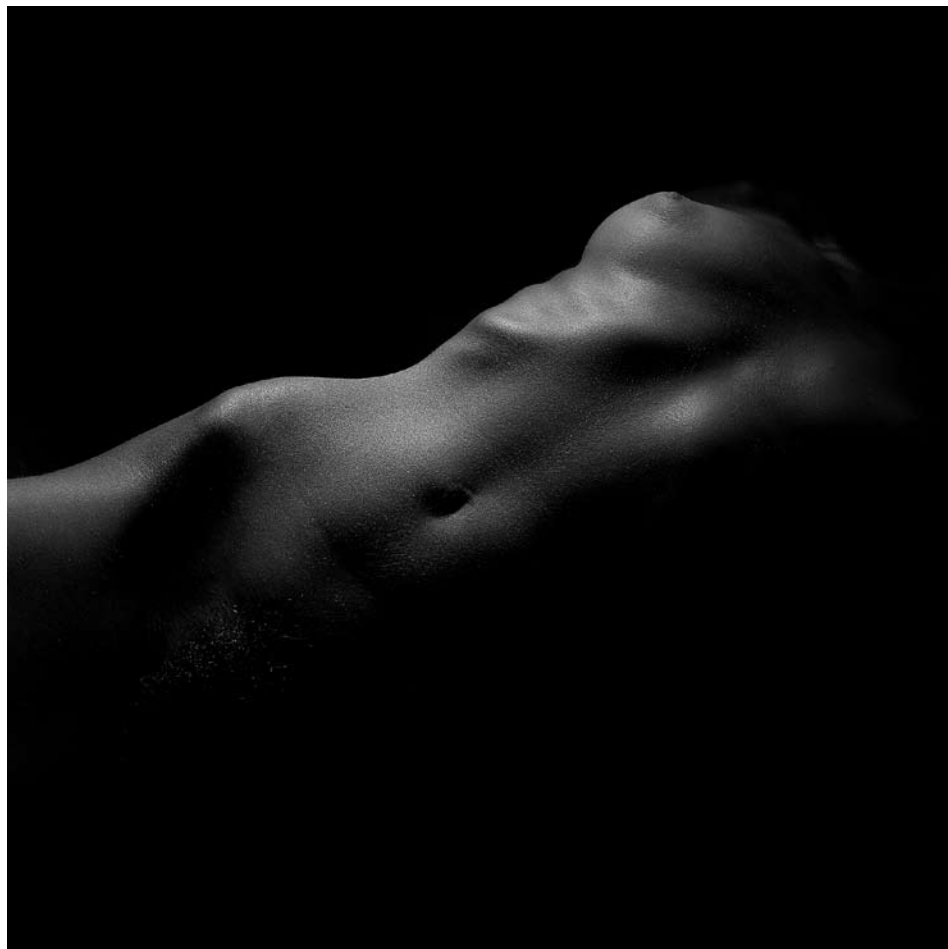
ALESSIO DELFINO

DES FEMMES
1999-2002

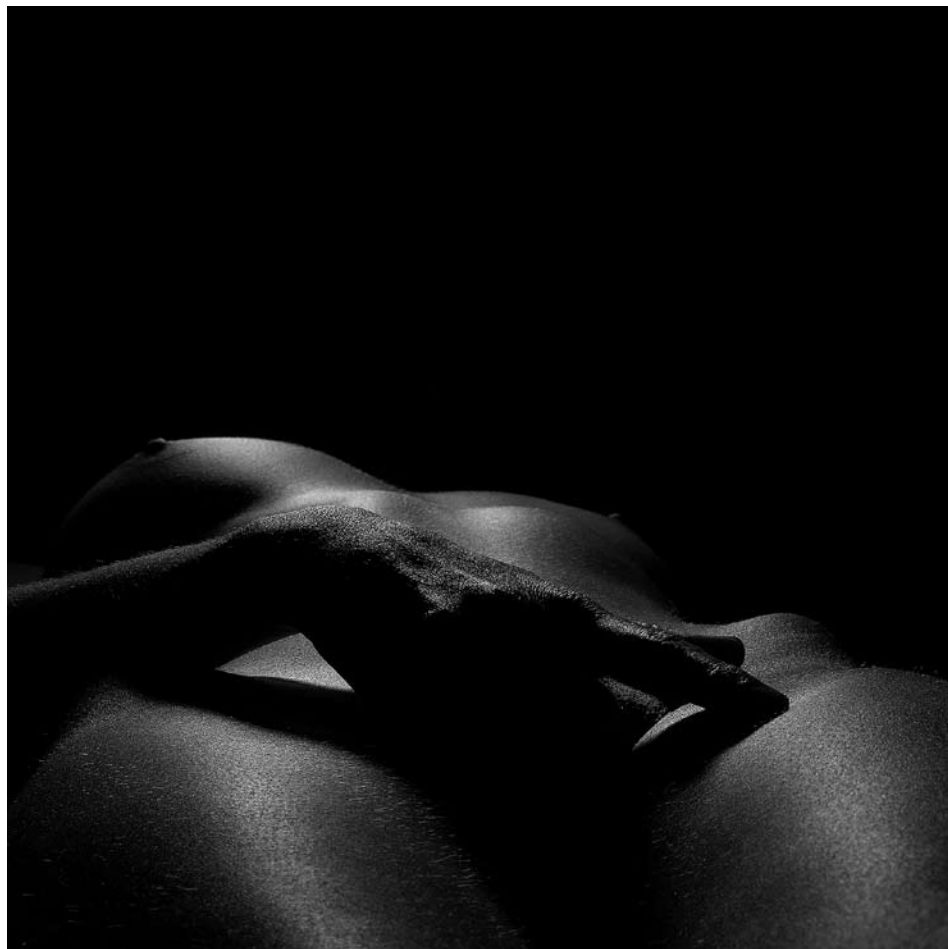
MOSTRA A CURA DI
SALVATORE GALLIANI

16 NOVEMBRE • 31 DICEMBRE 2002

STUDIO GHIGLIONE • PALAZZO DORIA
PIAZZA SAN MATTEO, 6B/R • GENOVA
TEL. 010.24.73.530 • FAX 010.24.73.295







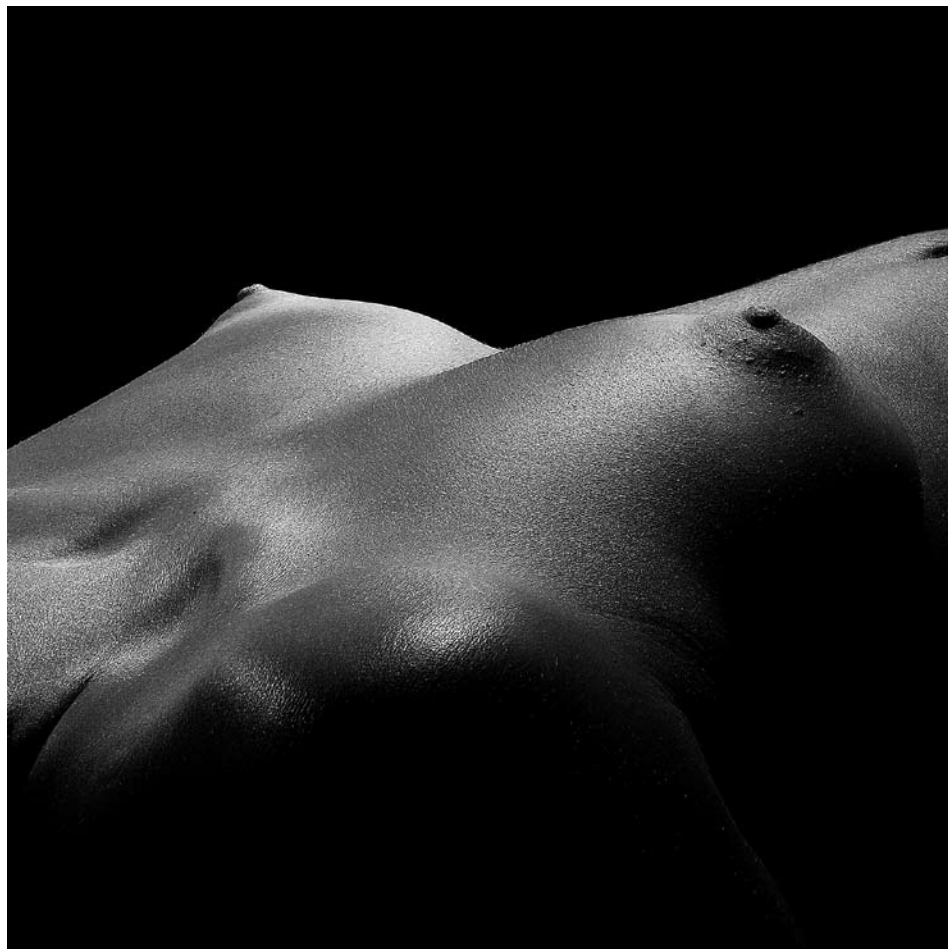








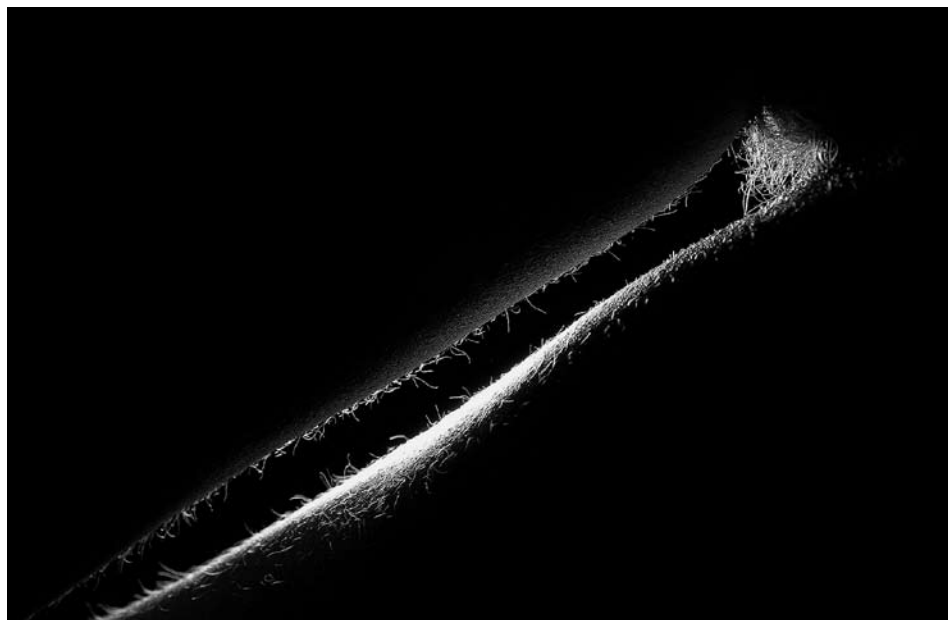


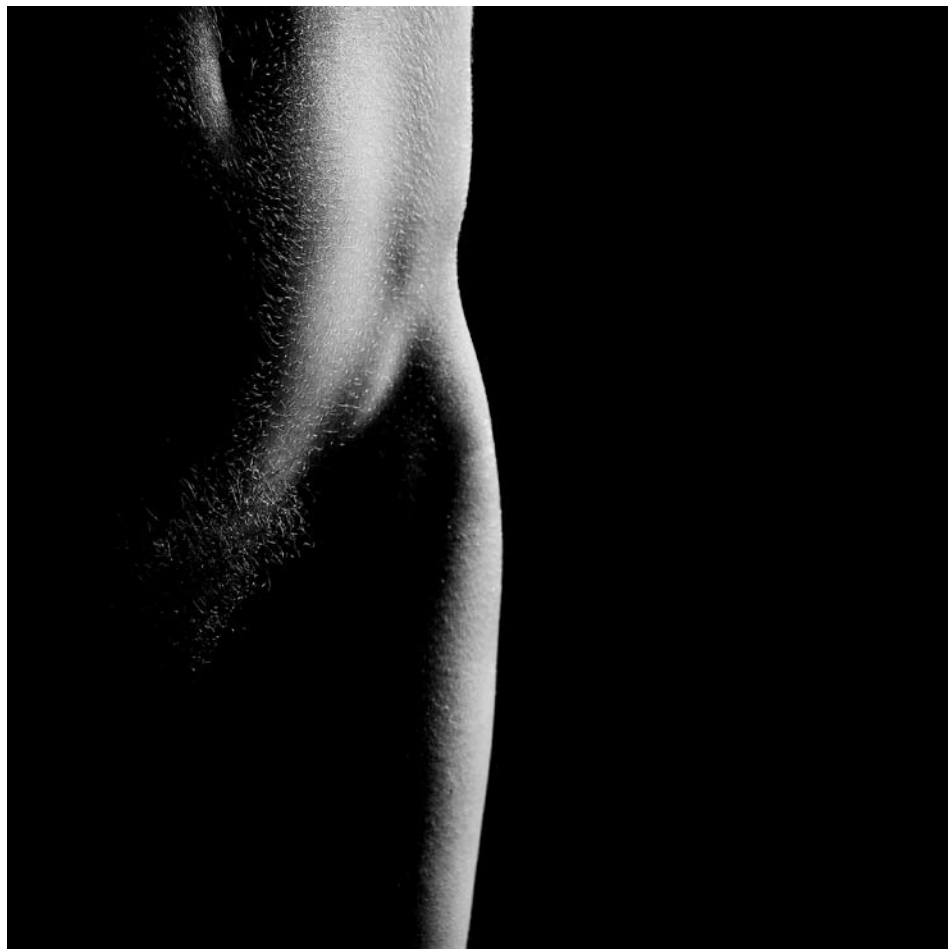




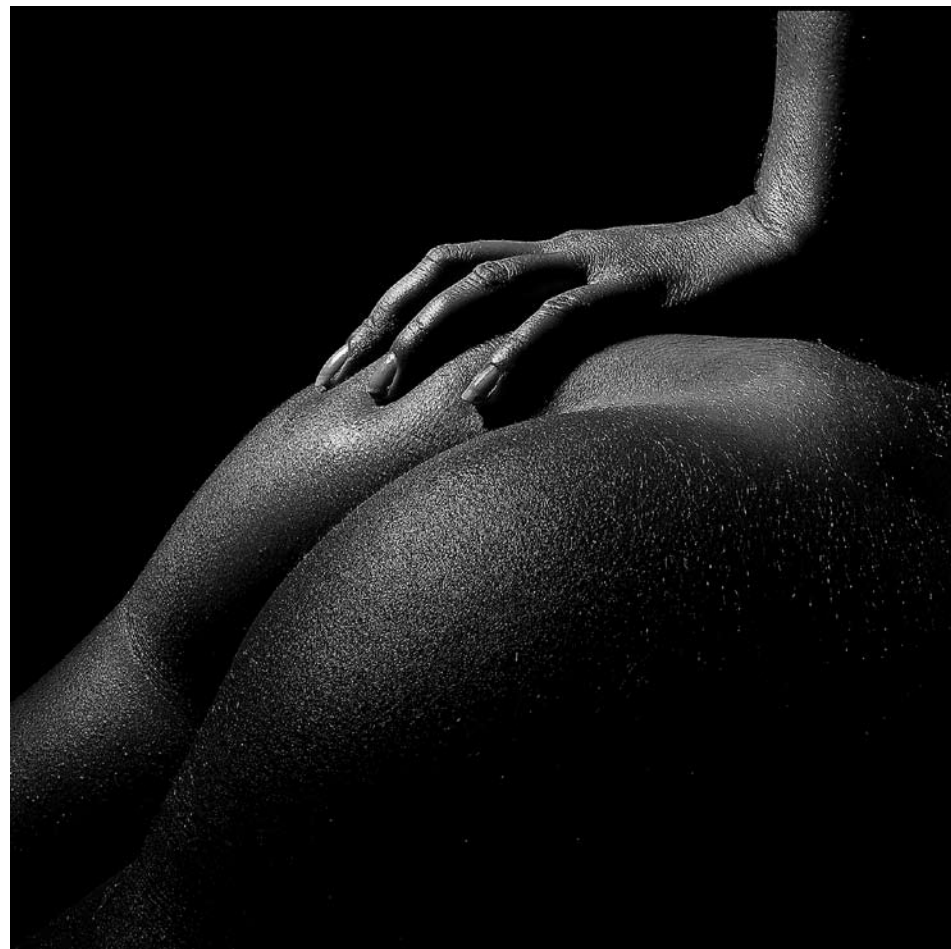








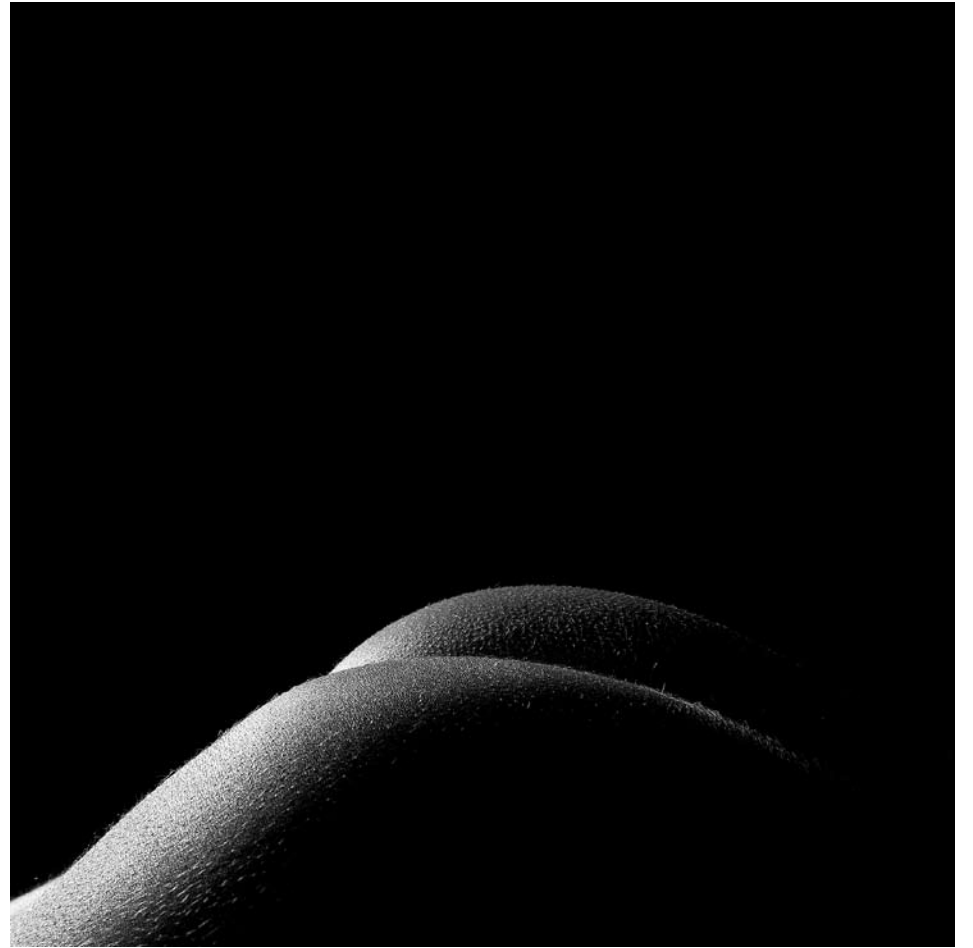


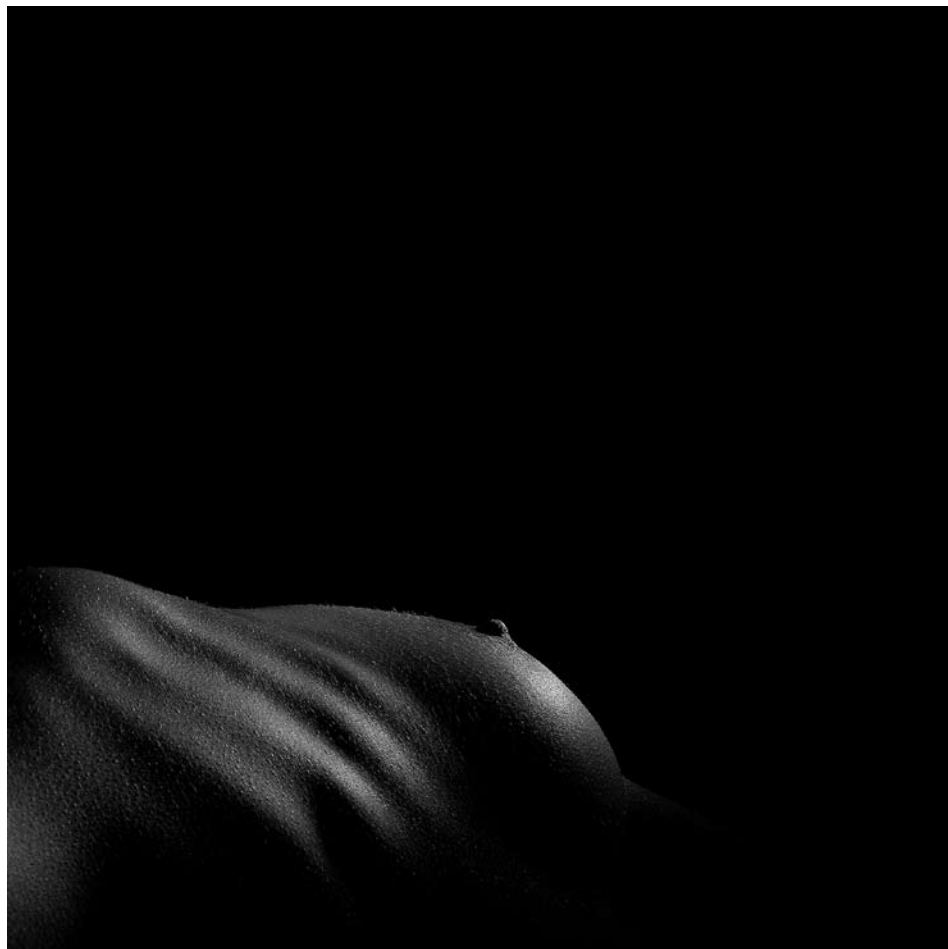


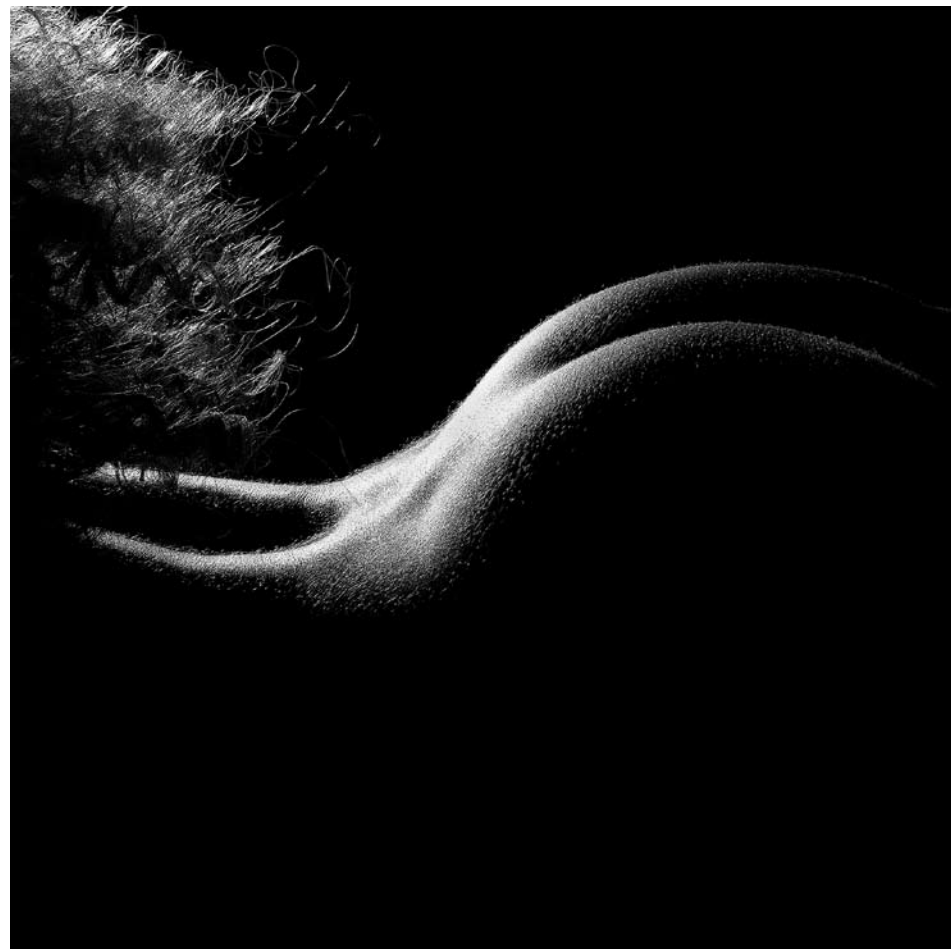














1. 2002 - DES FEMMES #1
STAMPA LAMBDA - CM. 40x40
Ed.1/4
2. 2002 - DES FEMMES #2
STAMPA LAMBDA - CM. 40x26
Ed.1/4
3. 2002 - DES FEMMES #3
STAMPA LAMBDA - CM. 25x25
Ed.1/4
4. 2002 - DES FEMMES #4
STAMPA LAMBDA - CM. 40x26
Ed.1/4
5. 2002 - DES FEMMES #5
STAMPA LAMBDA - CM. 40x40
Ed.1/4
6. 2002 - DES FEMMES #6
STAMPA LAMBDA - CM. 25x25
Ed.1/4
7. 1999 - DES FEMMES #7
STAMPA LAMBDA - CM. 40x40
Ed.1/4
8. 2002 - DES FEMMES #8
STAMPA LAMBDA - CM. 40x26
Ed.1/4
9. 2002 - DES FEMMES #9
STAMPA LAMBDA - CM. 25x25
Ed.1/4
10. 2002 - DES FEMMES #10
STAMPA LAMBDA - CM. 25x16
Ed.1/4
11. 2002 - DES FEMMES #11
STAMPA LAMBDA - CM. 40x40
Ed.1/4
12. 2002 - DES FEMMES #12
STAMPA LAMBDA - CM. 40x33
Ed.1/4
13. 2002 - DES FEMMES #13
STAMPA LAMBDA - CM. 40x26
Ed.1/4
14. 2001 - DES FEMMES #14
STAMPA LAMBDA - CM. 40x40
Ed.1/4
15. 2002 - DES FEMMES #15
STAMPA LAMBDA - CM. 40x26
Ed.1/4
16. 2002 - DES FEMMES #16
STAMPA LAMBDA - CM. 25x25
Ed.1/4
17. 2002 - DES FEMMES #17
STAMPA LAMBDA - CM. 25x25
Ed.1/4
18. 2002 - DES FEMMES #18
STAMPA LAMBDA - CM. 25x16
Ed.1/4
19. 2000 - DES FEMMES #19
STAMPA LAMBDA - CM. 40x40
Ed.1/4
20. 2002 - DES FEMMES #20
STAMPA LAMBDA - CM. 40x40
Ed.1/4
21. 2002 - DES FEMMES #21
STAMPA LAMBDA - CM. 40x40
Ed.1/4
22. 2001 - DES FEMMES #22
STAMPA LAMBDA - CM. 25x25
Ed.1/4
23. 2002 - DES FEMMES #23
STAMPA LAMBDA - CM. 40x40
Ed.1/4

